

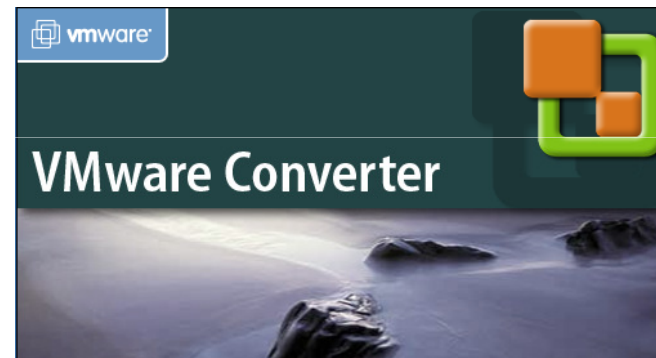


## Dnevi virtualizacije 2008



Tržaška cesta 63, 2000 Maribor  
tel.: +386 2 33 00 133, fax.: + 386 2 33 00 309  
Tbilisjska ulica 81, 1000 Ljubljana  
Tel.:+386 1 24 27 350, fax.: + 386 1 24 27 358  
e-mail: [izobrazevanja@lancom.si](mailto:izobrazevanja@lancom.si)

# Vmware Converter

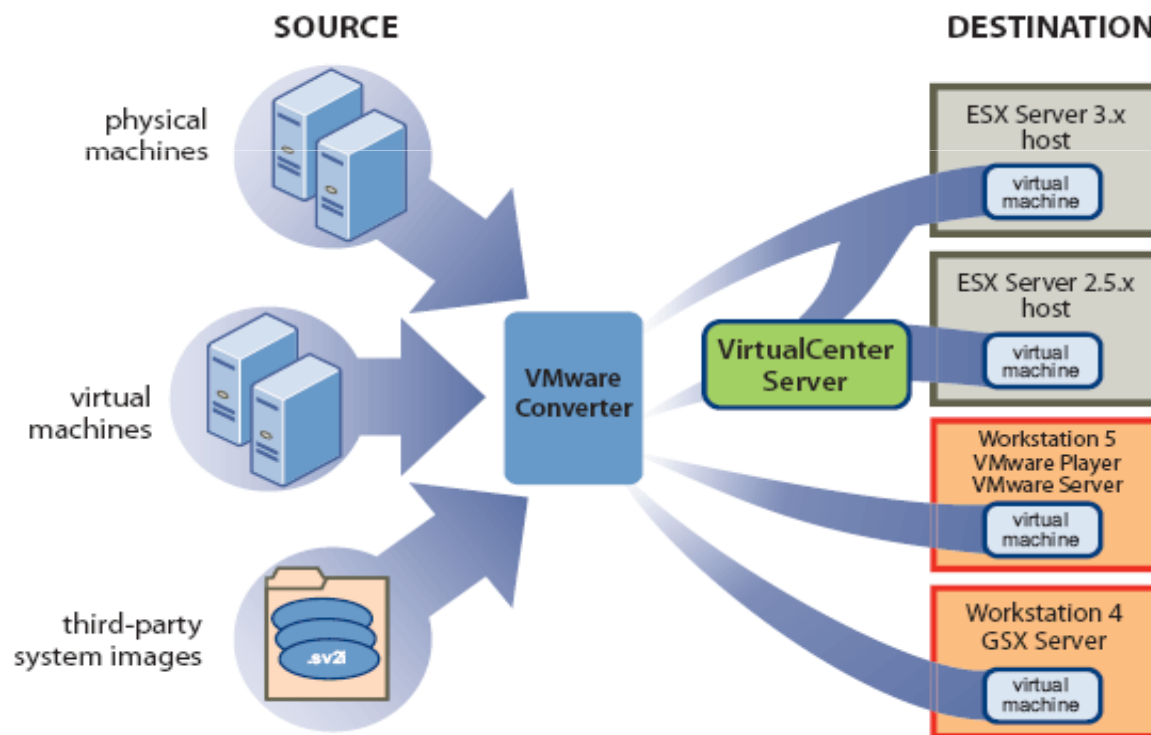


Predstavitev:  
**Rafko Kos**

# Vmware Converter

Vmware Converter je orodje tretje generacije, ki avtomatizira prenos iz izvornega okolja v navidezno Vmware okolje.

Izvorno okolje je lahko fizičen ali virtualen računalnik, ali pa slika računalnika v nekem drugem formatu (VHD, ghost)



# Vmware Converter

Imamo dve različici Vmware Converterja.

<i>Feature</i>	<i>Starter Edition</i>	<i>Enterprise Edition</i>
VM Mobility	✓	✓
Conversion of Windows Oses	✓	✓
Hot Cloning: Local	✓	✓
Hot Cloning: Remote Directly to Hosted VMware Platform	✓	✓
Hot Cloning: Remote Directly to ESX Server		✓
Cold Cloning		✓
Concurrent Tasks		✓
Pricing/Availability		Free to All



# Vmware Converter

Kaj pomeni:

- Hot cloning
- Cold Cloning
- Remote Cloning
- Local Cloning
- Volume-Based Cloning
- Disk-Based Cloning
- Restore VCB Image

The screenshot shows the VMware Converter application window. At the top, there is a menu bar (File, Edit, View, Task, Administration, Help) and a toolbar with buttons for 'Import Machine' and 'Configure Machine'. Below the toolbar is a table with columns: ID, Description, Source, Destination, Progress, Status, Start Time, and End Time. The table contains three rows of tasks:

ID	Description	Source	Destination	Progress	Status	Start Time	End Time
11	Import a physical machine	local machine	\\10.16.48.11...	14 %	In Progress	09/25/2006 04:00...	---
7	Configure standalone VM	\\10.16.48.11...		0 %	Completed	09/21/2006 03:11...	09/21/2006 03:11...
10	Configure standalone VM	\\10.16.48.11...		0 %	Completed	09/25/2006 03:58...	09/25/2006 03:59...

Below the table, the 'Task ID 11: Import a physical machine' configuration window is open. It shows the task details: 'From: local machine' and 'To: \\10.16.48.11\vmshare'. The configuration is divided into several sections:

- Source System Information:** Machine Type: Physical Machine; Name/IP Address: local machine; Authentication: Successful.
- Destination Customization:** Not customized.
- Destination System Information:** Virtual Machine Name: PC1; Location: \\10.16.48.11\vmshare.



# Vmware Converter

## Podprti operacijski sistemi

<i>Operating System</i>	<i>Clone</i>	<i>Configure</i>
Windows NT 4.0	✓	✓
Windows 2000	✓	✓
Windows XP 32-bit and 64-bit	✓	✓
Windows 2003 32-bit and 64-bit	✓	✓
MS-DOS	✓*	manual
Windows 9x	✓*	manual
Novell	✓*	manual
Linux	✓*	manual



# Vmware Converter

---

- Nastavitve izvornega računalnika, ki ostanejo nespremenjene:
  - Operating system configuration
    - Computer name
    - SID
    - User accounts
    - Profiles
    - Preferences
  - Applications and data files
  - The volume serial number of each disk partition



# Vmware Converter

---

- Spremembe na virtualni strojni opremi:
  - CPU model and serial numbers (if activated) can be different after the migration. They correspond to the physical computer hosting the VMware virtual machine.
  - Ethernet adapter can be different (AMD PCNet or VMXnet) with a different MAC address. Each interface's IP address must be individually reconfigured.
  - Graphics card can be different (VMware SVGA card).
  - Numbers of disks and partitions are the same, but each disk device can have a different model and different manufacturer strings.
  - Primary disk controllers can be different from the source machine's controllers.
  - Applications might not work if they depend on devices that are not available from within a virtual machine.

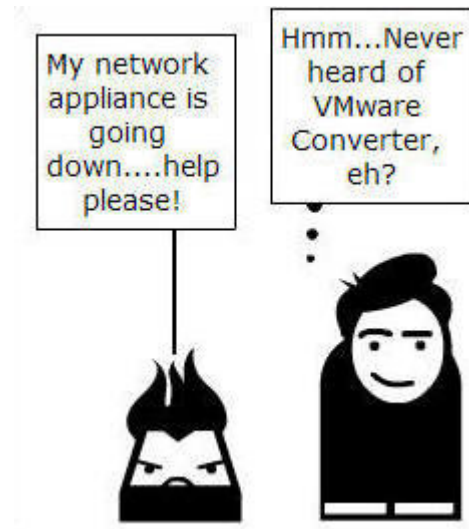


# Vmware Converter

---

Restore VCB image:

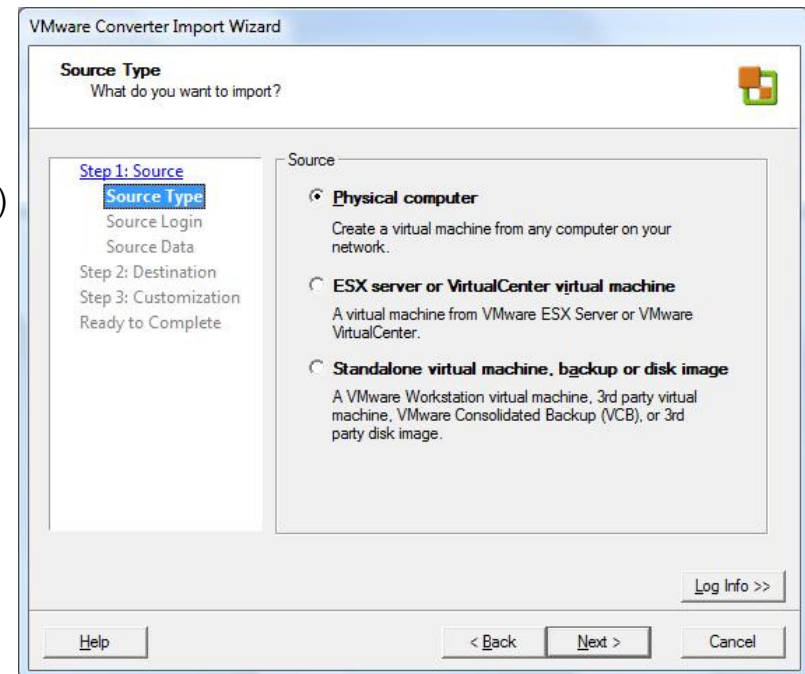
- Converter enterprise podpira restore Consolidated Backup slik kateregakoli operacijskega sistema
- Za Windows CB slike Converter Enterprise omogoča spremembo velikosti izbranih particiji in spremembo identitete restavriranega virtualnega strežnika
- Za vse ostale operacijske sisteme Converter enterprise omogoča le restore originalnih diskov



# Vmware Converter

## Katere VM lahko uvozimo?

- VMware Converter can import virtual machines created with:
  - Workstation 6.x, Workstation 5.x, and Workstation 4.x
  - VMware Fusion 1.x
  - ESX Server 3.x
  - ESX Server 2.5.x (if the server is managed with VirtualCenter 2.x)
  - GSX Server 3.x
  - VMware Server 1.x
  - VirtualCenter 2.x
  - Microsoft Virtual PC version 7 and later
  - Any version of Microsoft Virtual Server
- 
- VMware Converter can import system images from:
  - VMware Consolidated Backup
  - Acronis True Image 9
  - Symantec Backup Exec System Recovery (formerly LiveState Recovery) 6.5 and 7.0, LiveState Recovery 3.0 and 6.0, and Norton Ghost version 9.0, 10.0, and 12.0 (.sv2i files).
  - StorageCraft ShadowProtect (experimental support)



# Vmware Converter

---

# DEMO

